



Abesco FR Board (single sided)

In Blockwork / Masonry Wall with Service Penetrations

Technical Data Sheet

Product Description

Abesco FR Boards are designed to maintain the fire resistance of compartment walls where they are penetrated by services. They comprise of a 180 Kg /m3 mineral fibre slab, which is factory pre-coated with Abesco FR Ablative Coating (nominal 1000 microns WFT). The boards are available coated either single sided or double sided depending on the fire rating required, and whether there are services passing through the aperture. The system is completed by use of Abesco FR Intumescent Acrylic mastic at the interface between the FR Board and the services.

Nominal board dimensions are as follows:

Width	Height	Thickness
600mm	1200mm	60mm

Fire Performance Table

(2 x Single Sided Board)

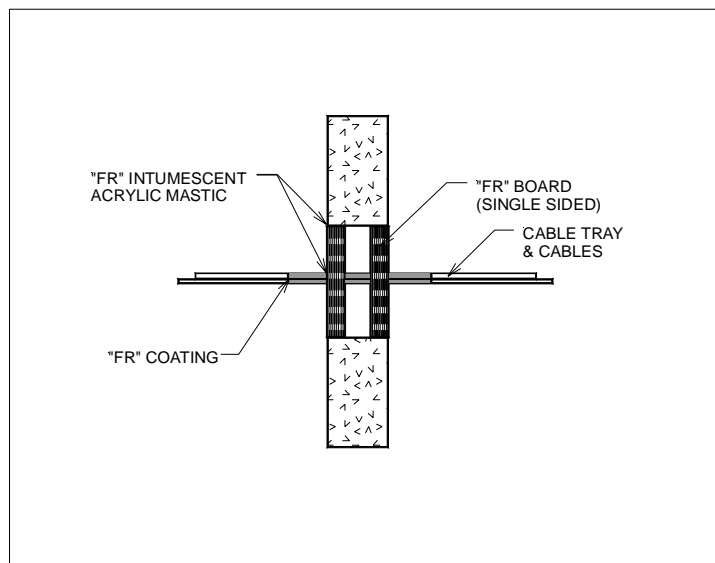
	Insulation	Integrity
FR Board	240 mins	240 mins
Services	240 mins	240 mins

Test Standards

Tested in accordance with the methodology and criteria described in:-

- BS 476 part 20:1987
- AS 1530 part 4:1990 & 4072 part 1:1992
- prEN 1366-3: 1993
- SABS 0177 Part 2 (1991)

Typical Detail



Installation Instructions

- 1 Ensure all surfaces and any penetrating services are clean, dry and free from grease, dust or other contamination.
- 2 Apply masking tape around the face of the aperture, approximately 50mm from the opening. Any penetrating services should also be masked at 150mm from each face of the FR Board(s).
- 3 Measure the overall dimensions of the aperture, and cut the FR Boards to suit.
- 4 Mark the positions of the penetrating services of the FR Boards, and carefully cut to a snug fit with a sharp knife or padsaw.
- 5 Brush apply FR Coating to all internal surfaces within the aperture, and to all contact surfaces on any penetrating services.
- 6 Carefully fit the previously cut FR boards into the aperture, ensuring that all board to board surfaces are also adequately coated with FR Coating (so that the coating acts as an adhesive at all joints).
- 7 Seal any gaps between the services and the FR Board, and between the FR Board and the surfaces of the aperture with Abesco FR Intumescent Acrylic Mastic.
- 8 Apply a brush coat of FR Coating (1000 microns wft) to all services for a distance of 150mm from the FR Board surface, and 50mm around the edge of the aperture (up to the masking tape), so as to leave a clear & crisp border around the seal.

As part of our policy of ongoing improvement, we reserve the right to modify, alter or change product specifications without giving notice. Product illustrations are representations only. All information contained in this document is provided for guidance only, and as Abesco Limited has no control over the installation methods of the products, or of the prevailing site conditions, no warranties expressed or implied are intended to be given as to the actual performance of the products mentioned or referred to, and no liability whatsoever will be accepted for any loss, damage or injury arising from the use of the information given of products mentioned or referred to herein.

Abesco Ltd, Abesco House
Laurencekirk Business Park
Laurencekirk
Scotland, UK
AB30 1EY

Phone: +44 (0) 1561 377766
Fax: +44 (0) 1561 378887
Email: technical@abesco.co.uk
Website: http://www.abesco.co.uk